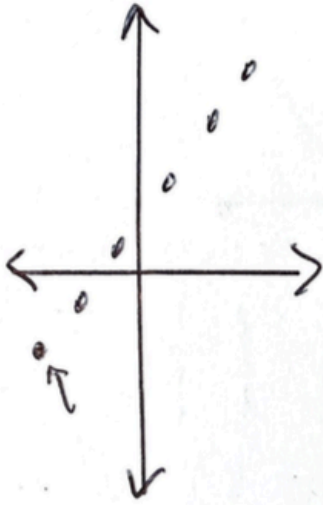


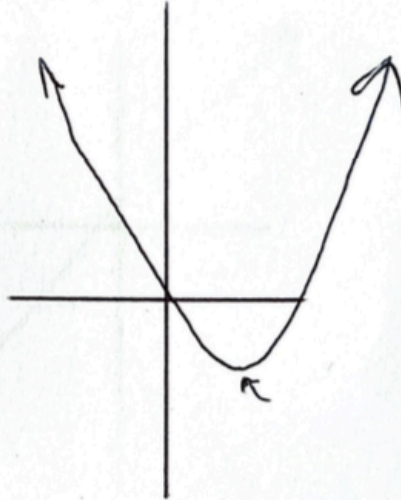
ABSOLUTE MINIMUM

GRAPHS: Has a point where no other point on the graph (even if extending through arrows, would be lower).

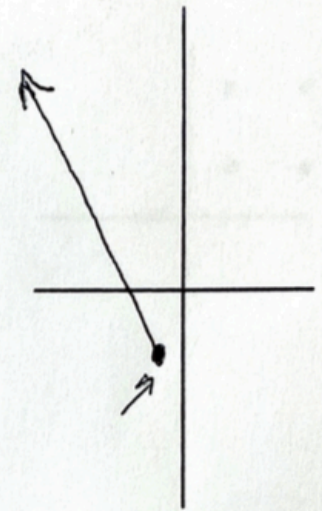
Example 1:



Example 2:



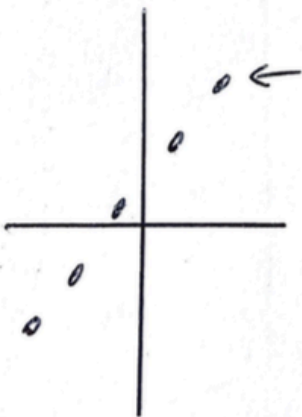
Example 3:



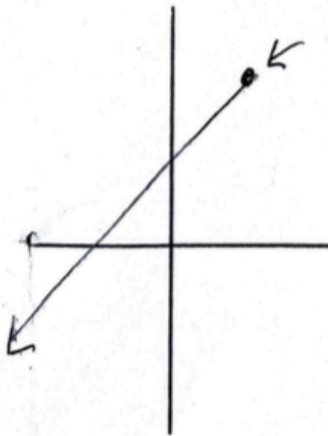
ABSOLUTE MAXIMUM

GRAPHS: Has a point where no other point on the graph (even if extending through arrows, would be higher).

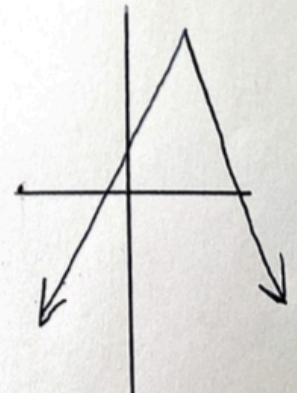
Example 1:



Example 2:



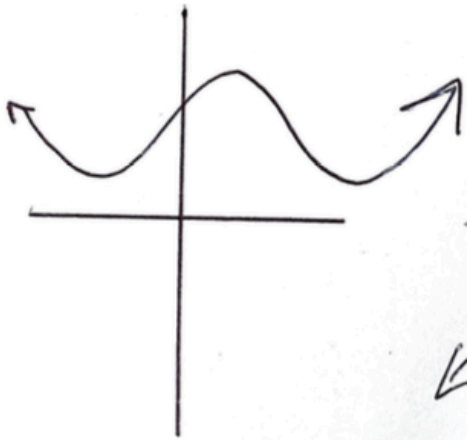
Example 3:



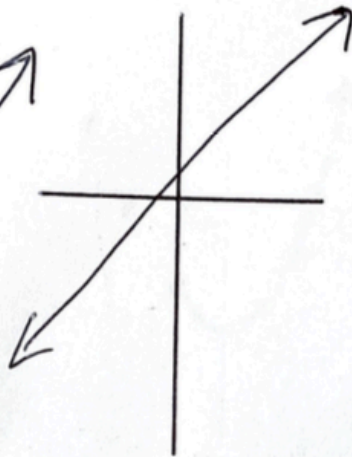
NEITHER

GRAPHS: Either a shared maximum/minimum value between two points OR graph continues infinitely up and down.

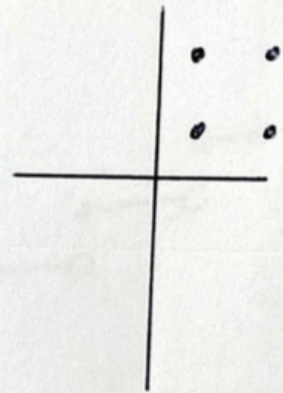
Example 1:



Example 2:



Example 3:



Example 4:

