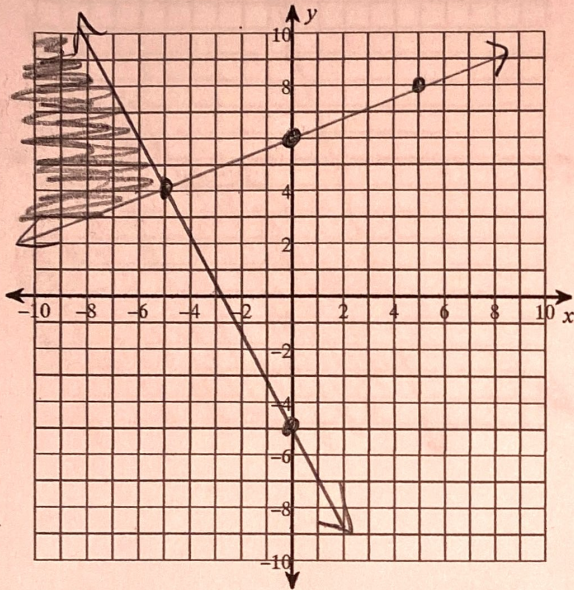


E - Graphing Systems of Inequalities WS#1

Sketch the solution to each system of inequalities.

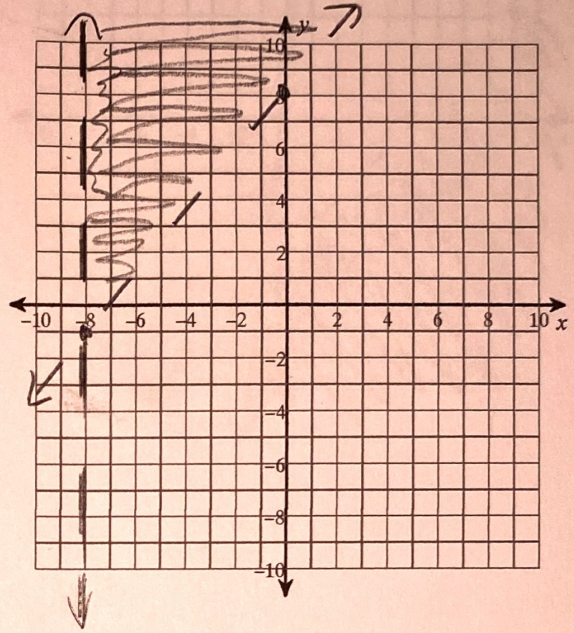
1) $y \leq -\frac{9}{5}x - 5$

$y \geq \frac{2}{5}x + 6$



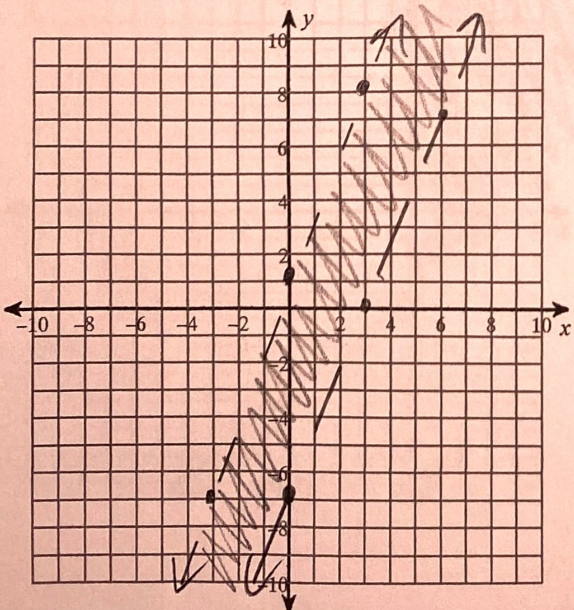
2) $y > \frac{9}{8}x + 8$

$x > -8$



3) $y < \frac{7}{3}x + 1$

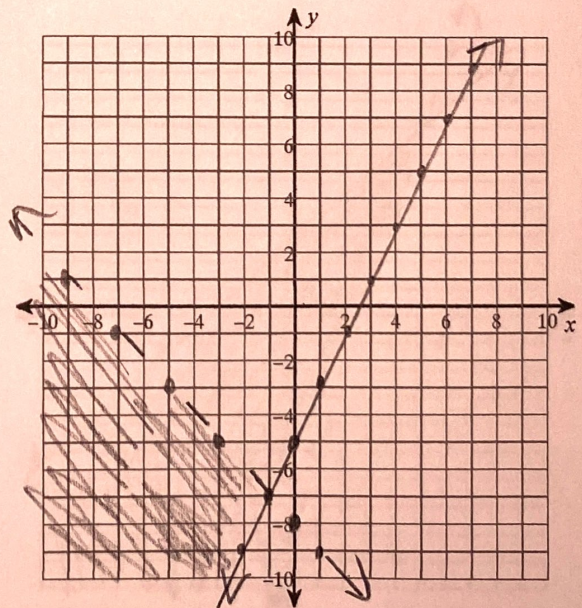
$y \geq \frac{7}{3}x - 7$



8) $y > 3x - 8$

4) $y < -x - 8$

$y \geq 2x - 5$

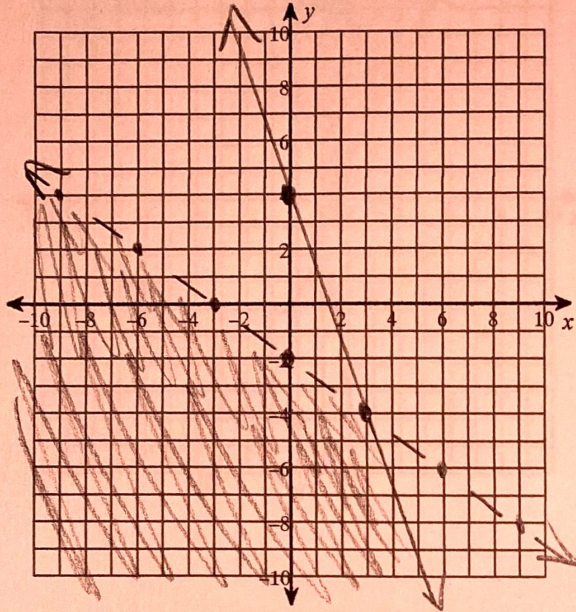


E, pg 2

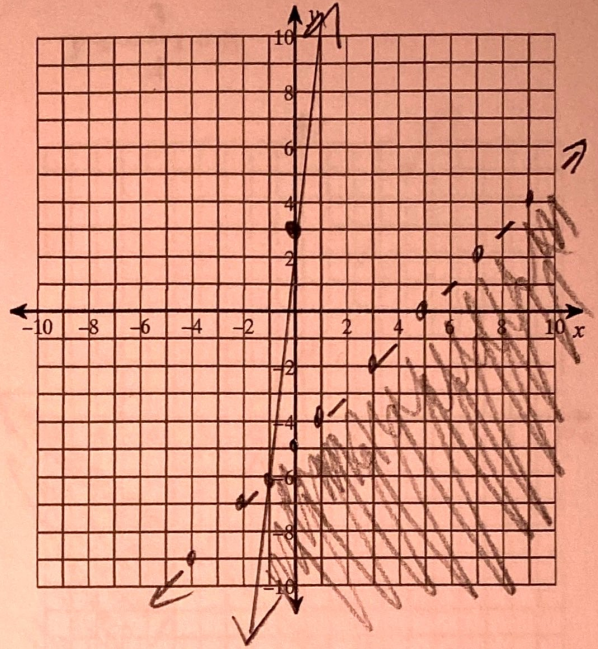
5) $y \leq -\frac{8}{3}x + 4$

$y < -\frac{2}{3}x - 2$

1)

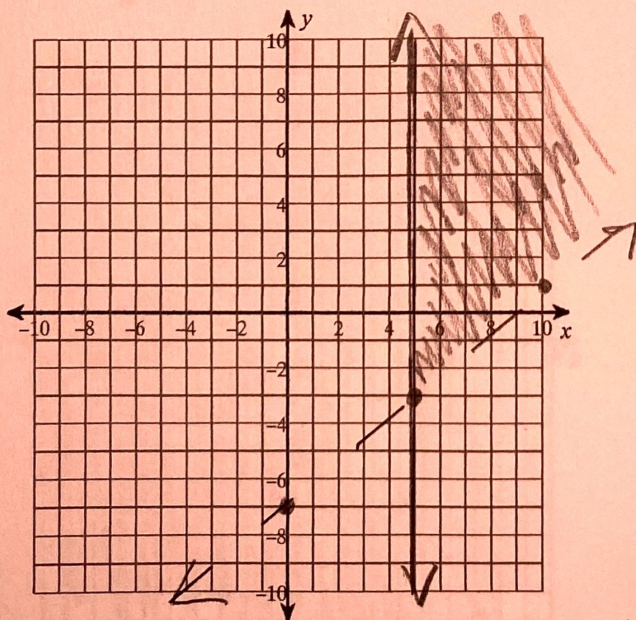


6) $y \leq 9x + 3$
 $y < x - 5$



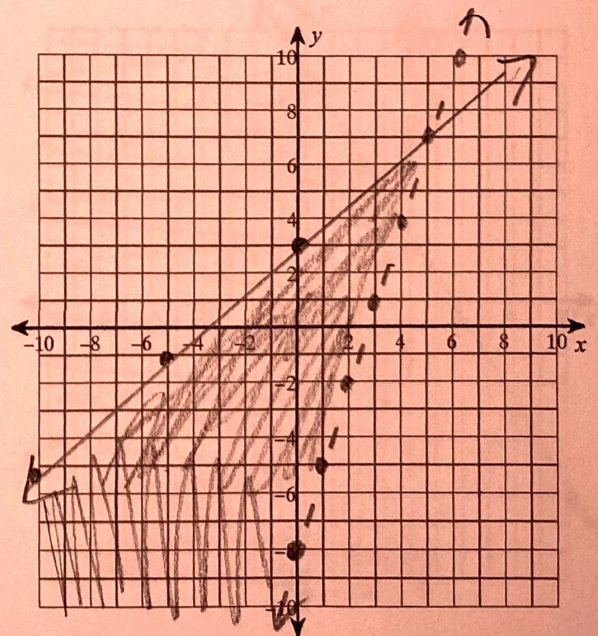
7) $x \geq 5$

$y > \frac{4}{5}x - 7$



8) $y > 3x - 8$

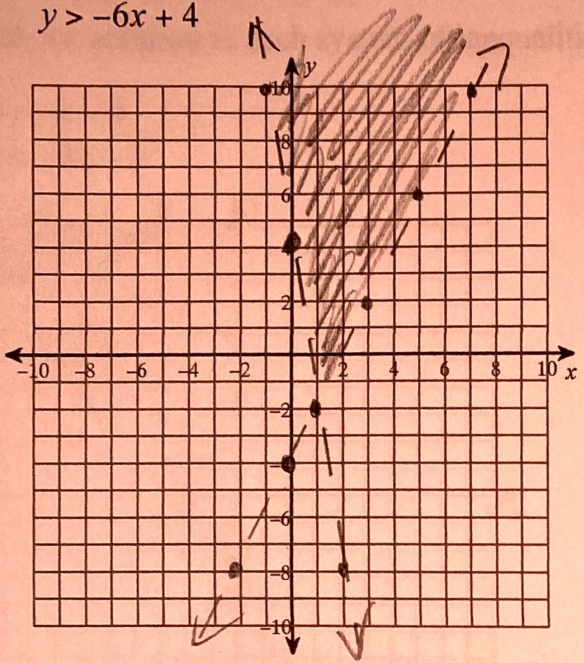
$y \leq \frac{4}{5}x + 3$



E, pg 3

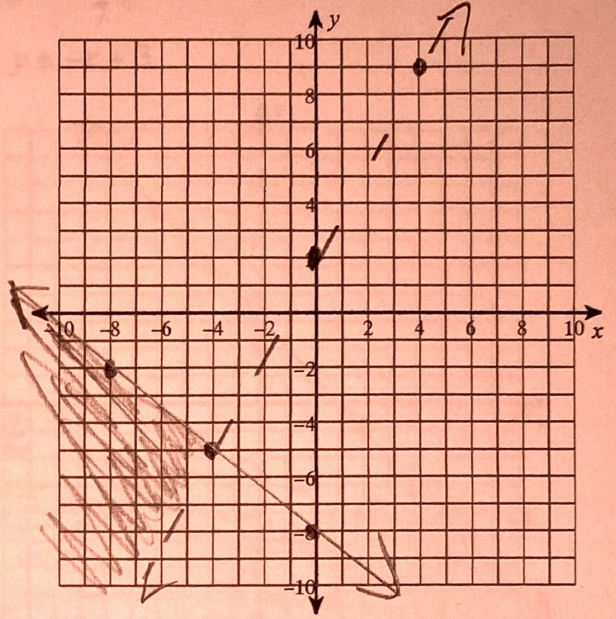
9) $y > 2x - 4$
 $y > -6x + 4$

1,

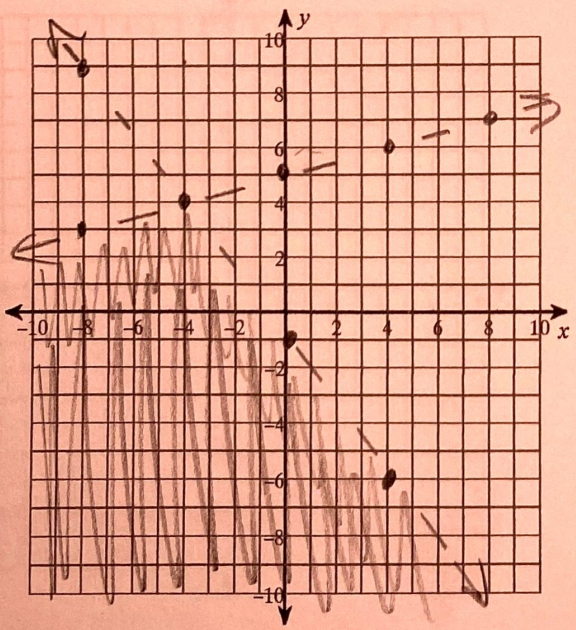


10) $y > \frac{7}{4}x + 2$

$y \leq -\frac{3}{4}x - 8$



11) $y < -\frac{5}{4}x - 1$
 $y < \frac{1}{4}x + 5$



12) $x < 4$

$y \leq -\frac{3}{2}x + 8$

