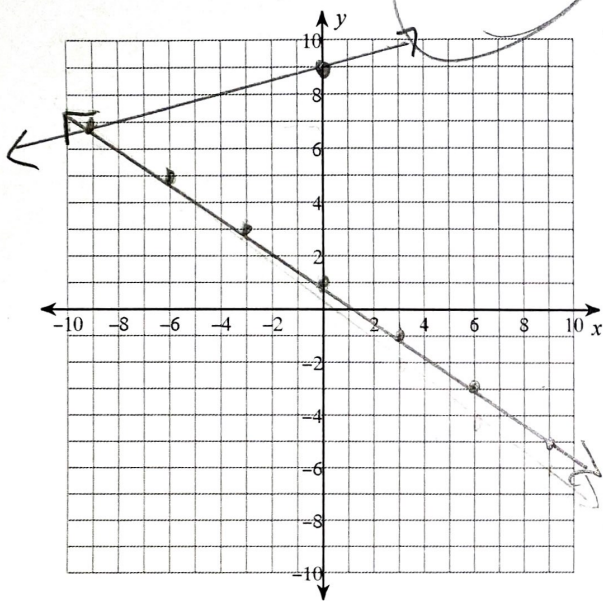


## Graphing systems and systems of inequalities

Solve each system by graphing.

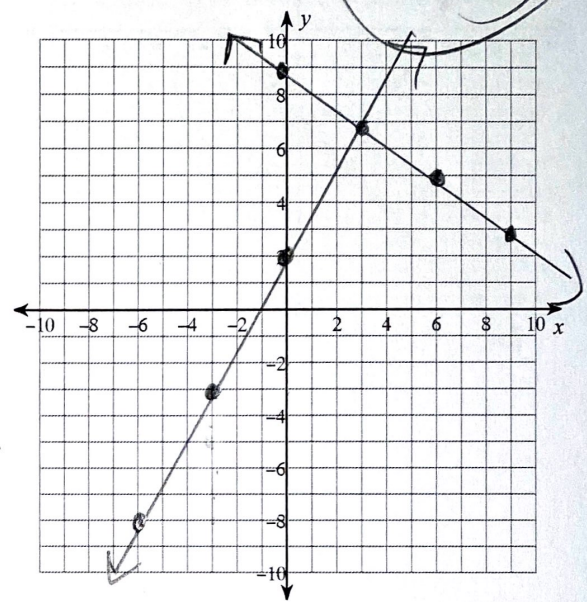
1)  $y = \frac{2}{9}x + 9$

$y = -\frac{2}{3}x + 1$



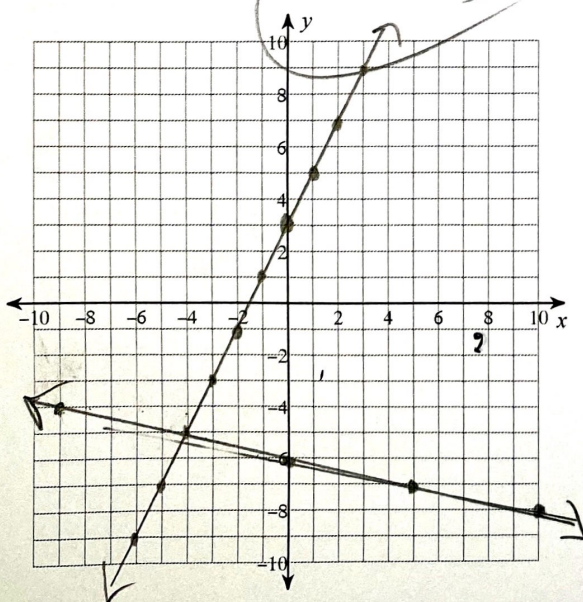
2)  $y = \frac{5}{3}x + 2$

$y = -\frac{2}{3}x + 9$



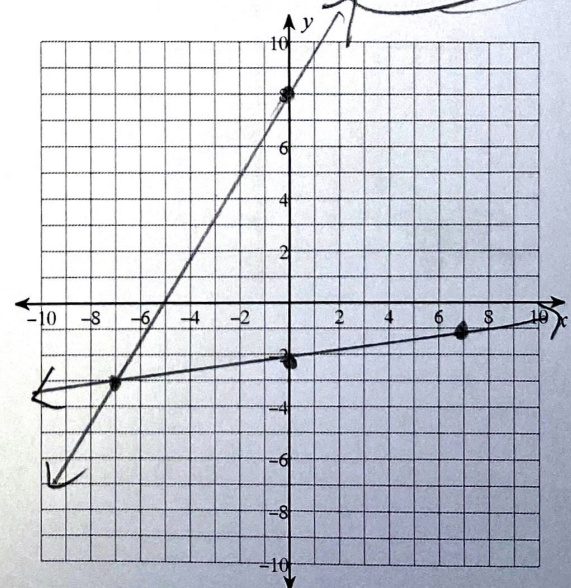
3)  $y = 2x + 3$

$y = \frac{1}{5}x - 6$



4)  $y = \frac{1}{7}x - 2$

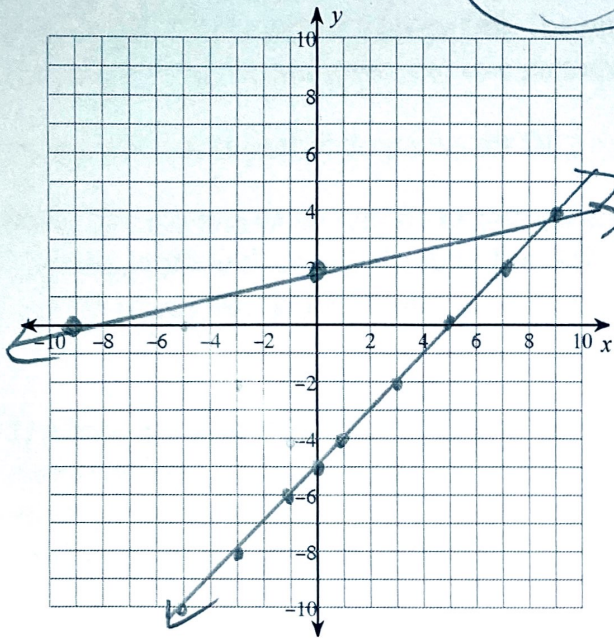
$y = \frac{11}{7}x + 8$



# Graphing systems, cont.

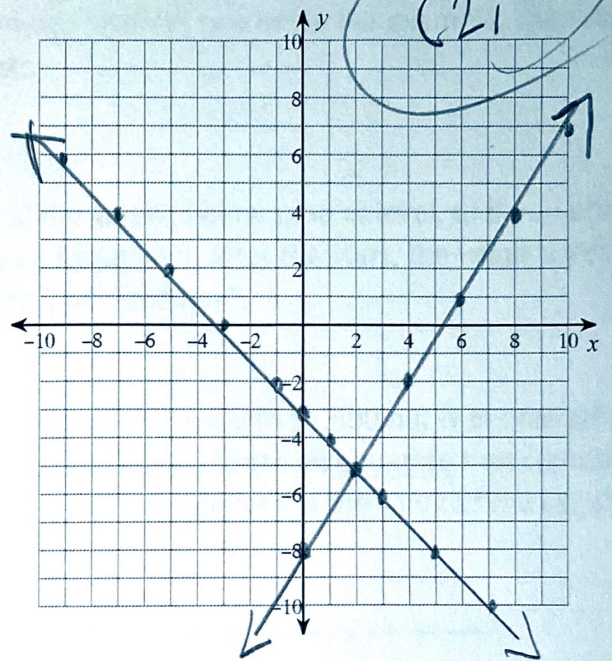
5)  $y = \frac{2}{9}x + 2$   
 $y = x - 5$

$(9, 4)$



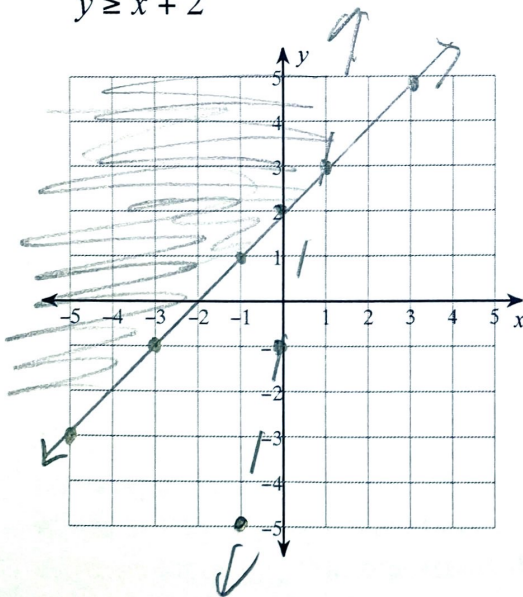
6)  $y = -x - 3$   
 $y = \frac{3}{2}x - 8$

$(2, -5)$



Sketch the solution to each system of inequalities.

7)  $y > 4x - 1$   
 $y \geq x + 2$



8)  $y \leq -\frac{1}{3}x - 2$   
 $y > -\frac{5}{3}x + 2$

