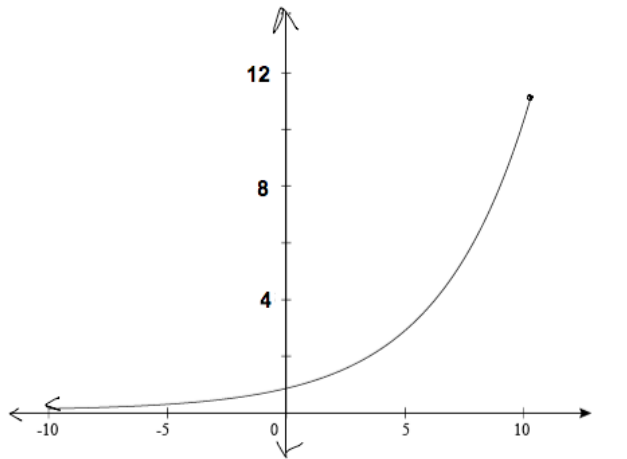


Lesson 3, extra practice

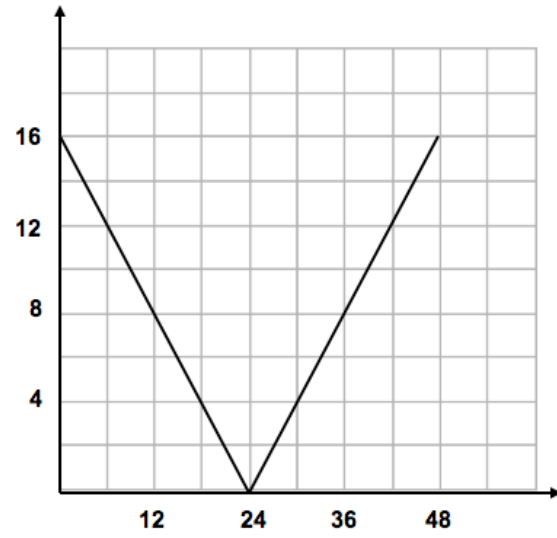
On a separate sheet of paper, answer the following for each of the graphs below:

- Discrete or continuous?
- Linear, quadratic, exponential, or absolute value?
- Which type of equation would match the graph:
i) $y = ax^2 + bx + c$, ii) $y = a|x - h| + k$, iii) $y = ab^x$, iv) $y = mx + b$
- Is the graph increasing, decreasing, or constant? If it is a mixture of more than one, describe the interval where each occurs.
- Does it have an absolute minimum, an absolute maximum, or neither? Give the ordered pair of any absolute maximum or minimum.
- What are the domain and range?

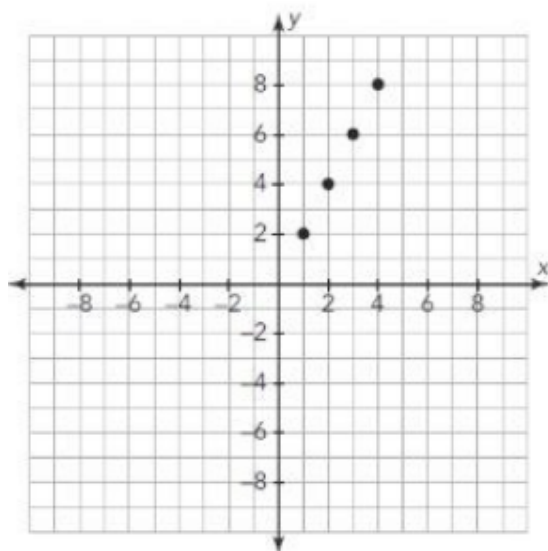
1)



2)



3)



4)

